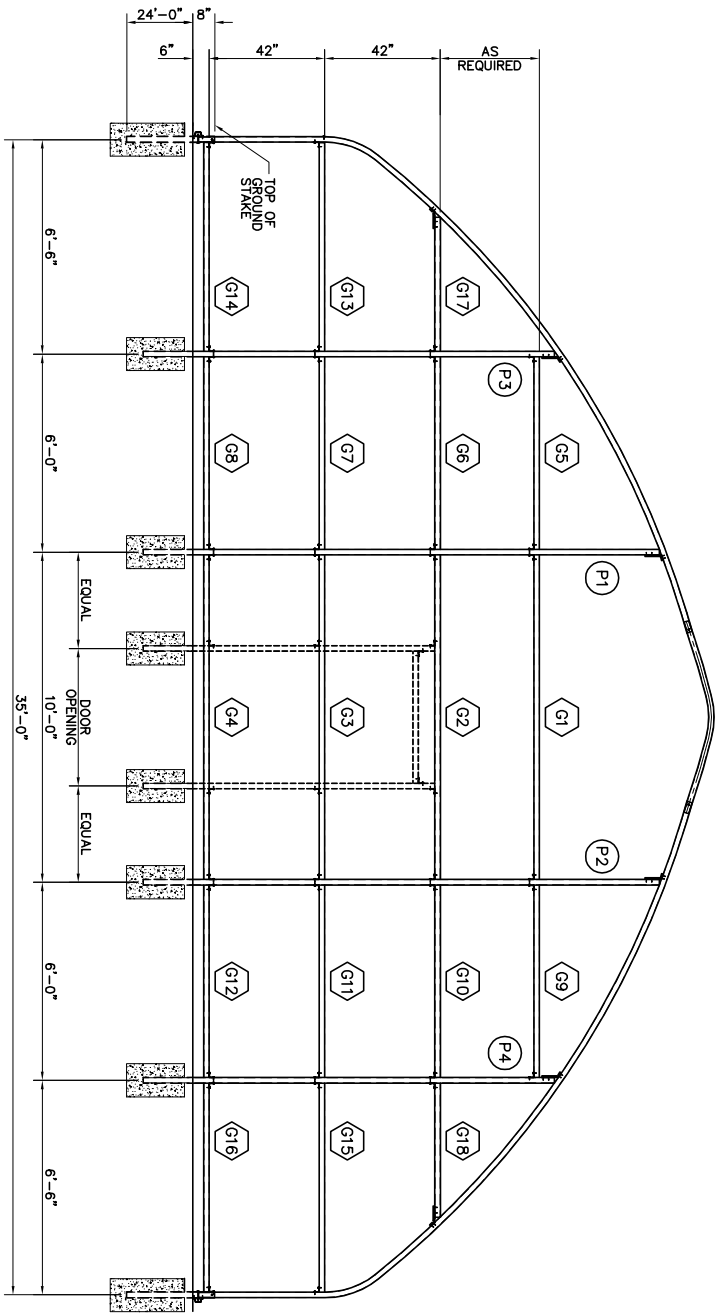


NOTES:
 Below is the suggested post and girt spacing layout for one end when using steel gable framing kit (optional). This kit contains sufficient lengths of 2" square steel tubing to be field cut as per cutting schedule.
 Any deviations from noted post spacings will alter these lengths and may result in insufficient amounts of tubing.



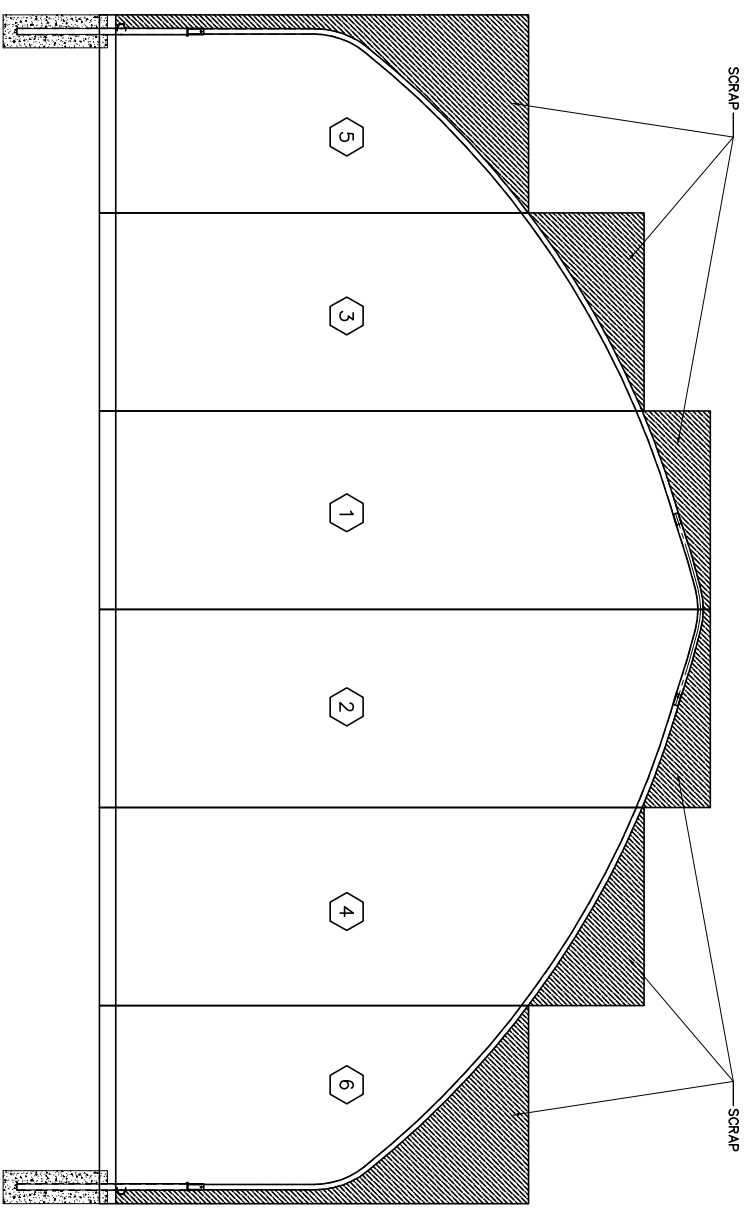
A 4'-0" END FRAMING
 SS.01 SCALE: N.T.S.

POST & GIRT CUTTING SCHEDULE
 (8 PIECES OF 2" SQ TUBE @ 285")
 (VERIFY LENGTHS IN FIELD)

P1	G17
P2	G18
P3	G1
P4	G2
G3	G13
G4	G15
G5	G6
G6	G7
G9	G10
G10	G11
G11	G12

- P1 THRU P2 = 192" (16'-0")
- P3 THRU P4 = 150" (12'-6")
- G1 THRU G4 = 118" (9'-10")
- G5 THRU G12 = 70" (5'-10")
- G13 THRU G16 = 76" (6'-4")
- G17 THRU G18 = 48" (4'-0")

C POSTS & GIRTS
 SS.01 SCALE: N.T.S.



B 4'-0" END GLAZING
 SS.01 SCALE: N.T.S.

6'-0" WIDE POLYCARBONATE SHEETS
 SHEETS #1 & #2 ARE 198" (16'-6")
 SHEETS #3 & #4 ARE 174" (14'-6")
 SHEETS #5 & #6 ARE 132" (11'-0")
 REQUIRES 80 LINEAL FEET OF DOUBLE H-SPLICE
 REQUIRES 120 SCREWS

GOLDEN PACIFIC STRUCTURES
 THE STRUCTURE SPECIALISTS
 313 Borden Way
 Redmond, OR 97756
 Phone: 503-543-7955
 Fax: 503-589-4665
 Email: gp@goldenpacific.com

ENGINEERS' STAMP:
 ENGINEER'S SEAL APPLIES TO CORPUS ONLY

REVISION RECORD

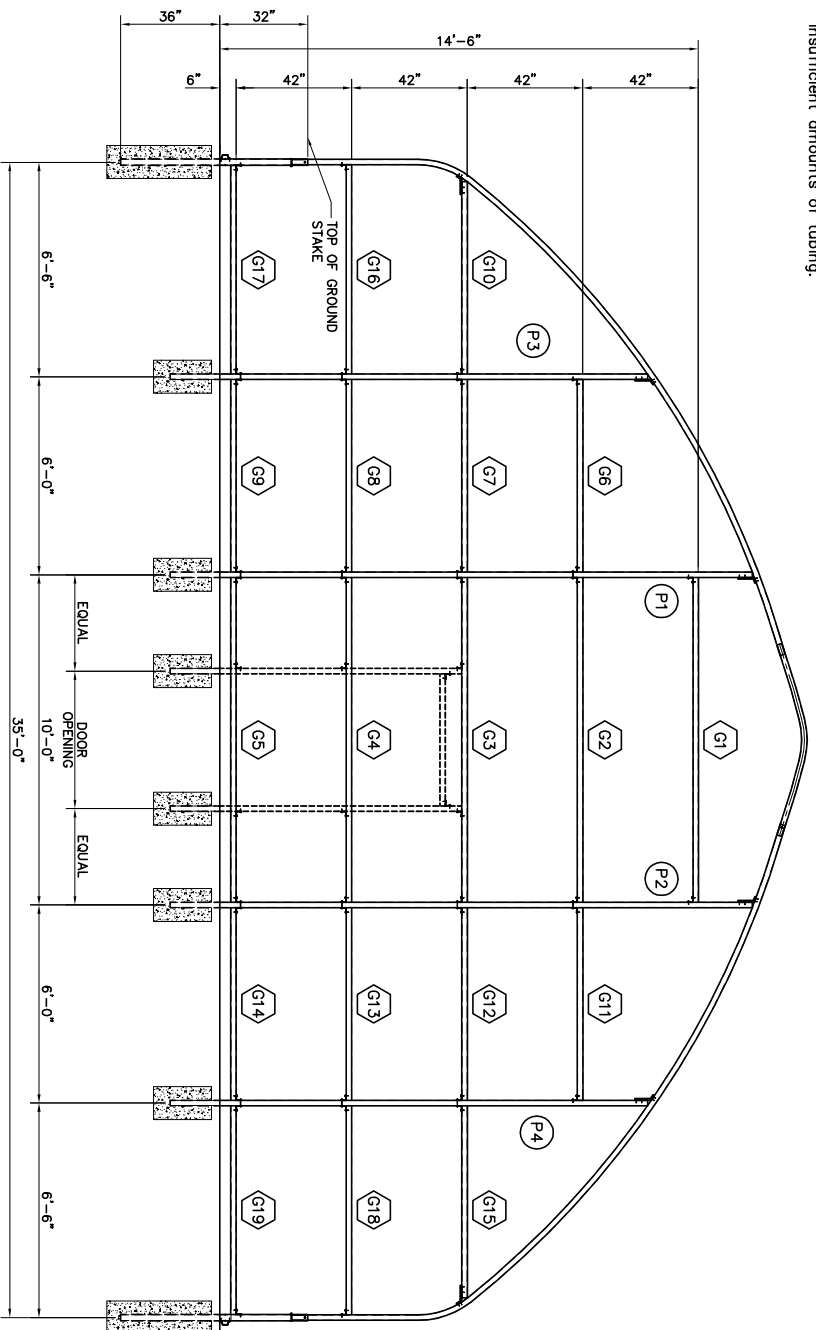
NO.	DATE	DESCRIPTION
1	11/20/07	ISSUED

GOLDEN PACIFIC

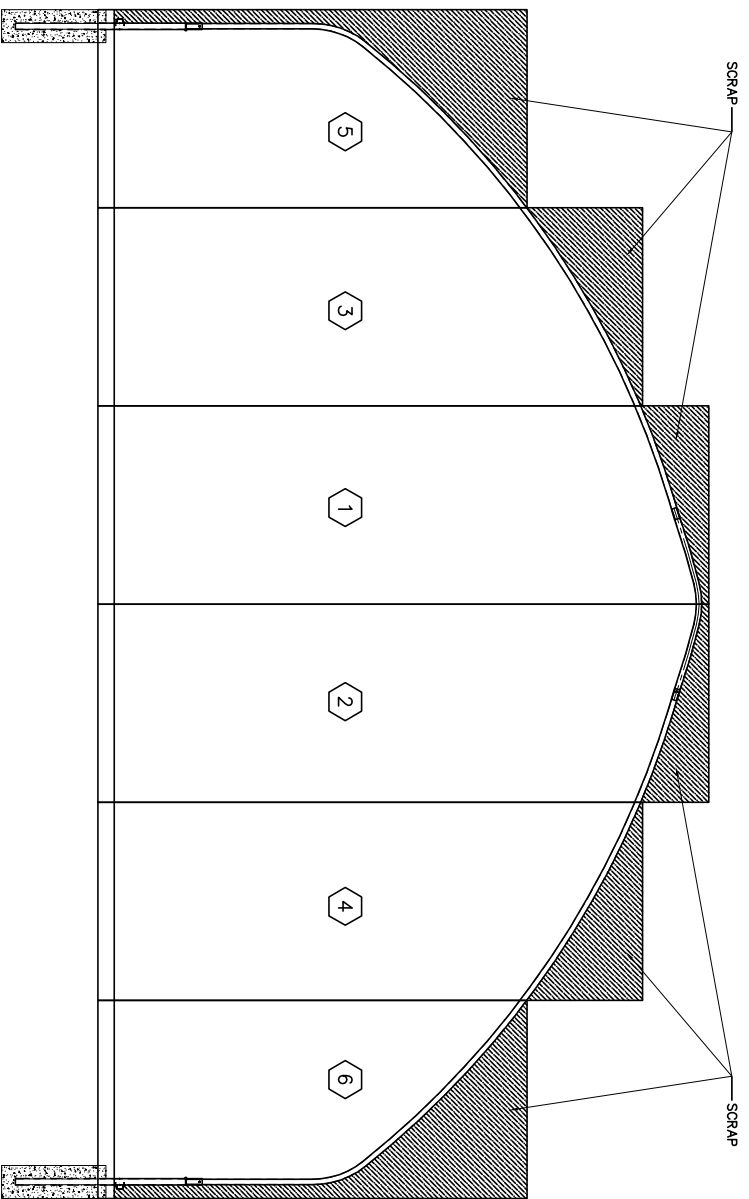
R.B.I. NO. :
 DRAWN BY: XXX
 DOCUMENT DATE: 04/20/07
 SHEET TITLE: 35FT HOUSE - 4'-0" SIDEWALL

SS.01

NOTES:
 Below is the suggested post and girt spacing layout for one end when using steel gable framing kit (optional). This kit contains sufficient lengths of 2" square steel tubing to be field cut as per cutting schedule.
 Any deviations from noted post spacings will alter these lengths and may result in insufficient amounts of tubing.

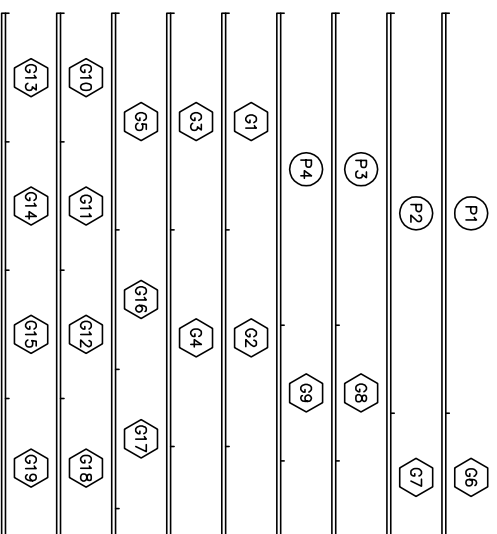


A 6'-0" END FRAMING
 S6.01 SCALE: N.T.S.



B 6'-0" END GLAZING
 S6.01 SCALE: N.T.S.

POST & GIRT CUTTING SCHEDULE
 (8 PIECES OF 2" SQ TUBE @ 288")
 (VERIFY LENGTHS IN FIELD)



- (P1) THRU (P2) = 218" (18'-2")
- (P3) THRU (P4) = 174" (14'-6")
- (G1) THRU (G5) = 118" (9'-10")
- (G6) THRU (G15) = 70" (5'-10")
- (G16) THRU (G19) = 76" (6'-4")

C POSTS & GIRTS
 S6.01 SCALE: N.T.S.

6'-0" WIDE POLYCARBONATE SHEETS
 SHEETS #1 & #2 ARE 222" (18'-6")
 SHEETS #3 & #4 ARE 198" (16'-6")
 SHEETS #5 & #6 ARE 156" (13'-0")
 REQUIRES 94 LINEAL FEET OF DOUBLE H-SPLICE
 REQUIRES 140 SCREWS



313 S. Oregon
 Redmond, OR 97754
 503-543-7955
 Fax: 509-389-4665
 Email: gp@goldenpacific.com

ENGINEERS' STAMP:
 ENGINEERS SEAL APPLIES TO CORPUS ONLY

REVISION RECORD

NO.	DATE	DESCRIPTION
1	11/05/08	ISSUED

GOLDEN PACIFIC

R.B.I. NO. :
 DRAWN BY: XXX
 DOCUMENT DATE: 04/20/07
 SHEET TITLE: 35FT HOUSE - 6'-0" SIDEWALL

S6.01