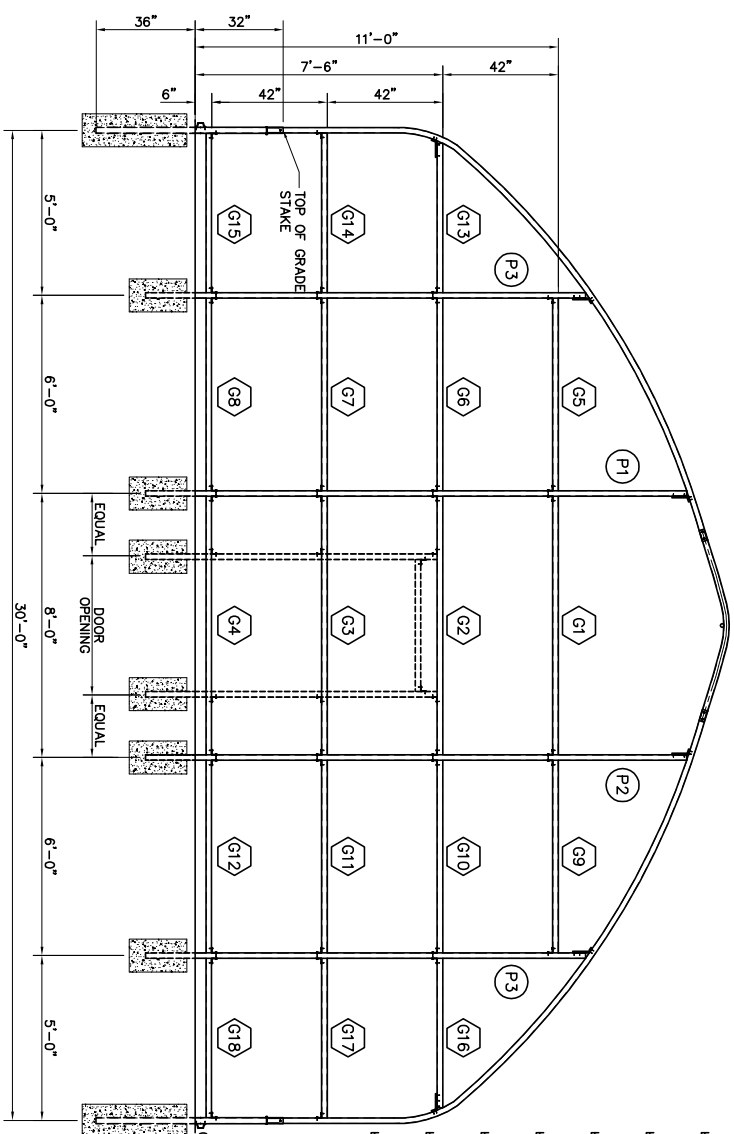
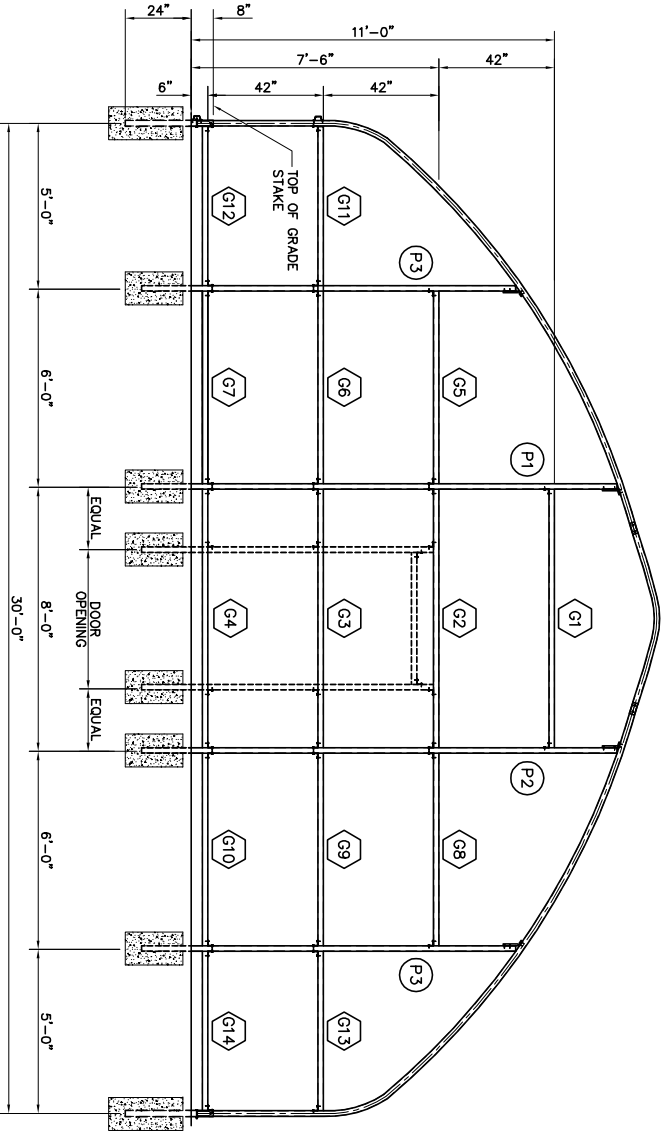


NOTES:  
Below is the suggested post and girt spacing layout for one end when using steel gable forming kit (optional). This kit contains sufficient lengths of 2" square steel tubing to be field cut as per cutting schedule.  
Any deviations from noted post spacings will alter these lengths and may result in insufficient amounts of tubing.

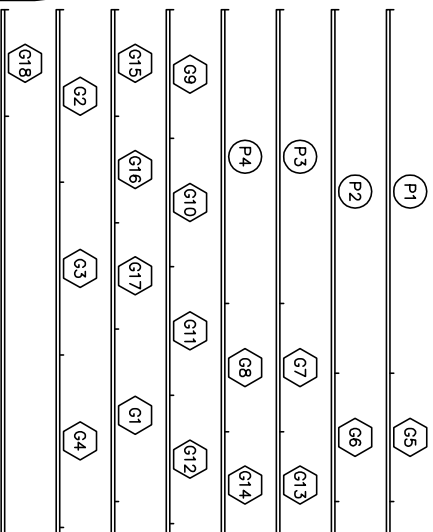


**A** 6'-0" END FRAMING  
S4.01 SCALE: N.T.S.



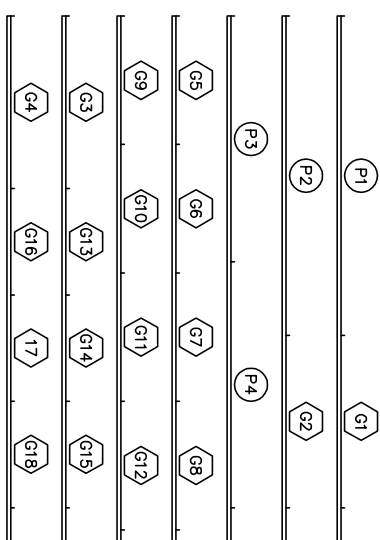
**D** 4'-0" END FRAMING  
S4.01 SCALE: N.T.S.

POST & GIRTS CUTTING SCHEDULE  
(8 PIECES OF 2" SQ. TUBE @ 288")  
(VERIFY LENGTHS IN FIELD)

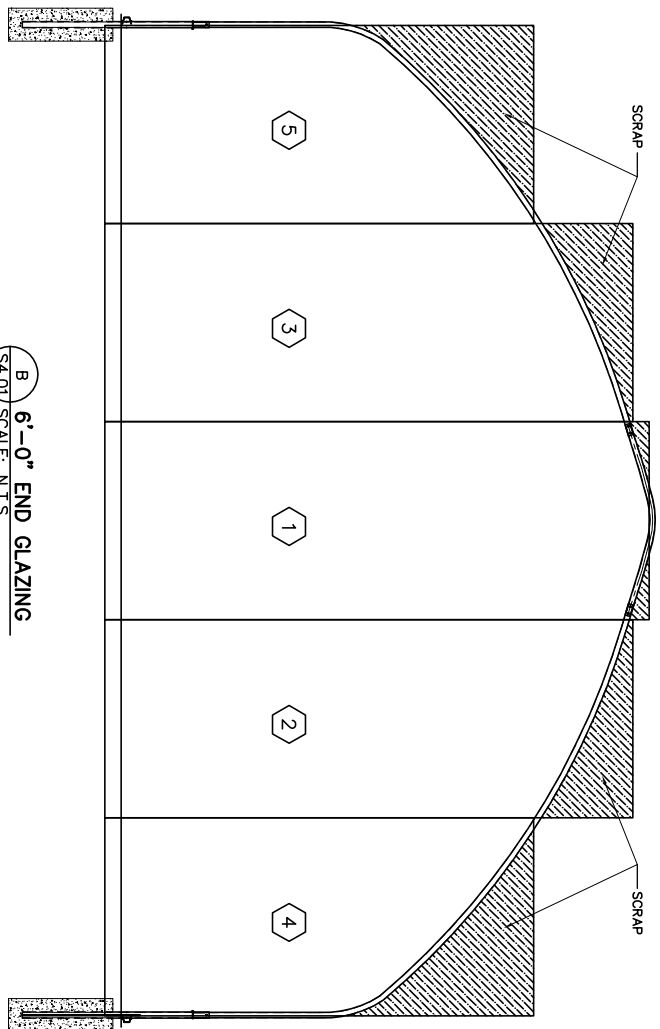


**C** POSTS & GIRTS  
S4.01 SCALE: N.T.S.

POST & GIRTS CUTTING SCHEDULE  
(7 PIECES OF 2" SQ. TUBE @ 288")  
(VERIFY LENGTHS IN FIELD)

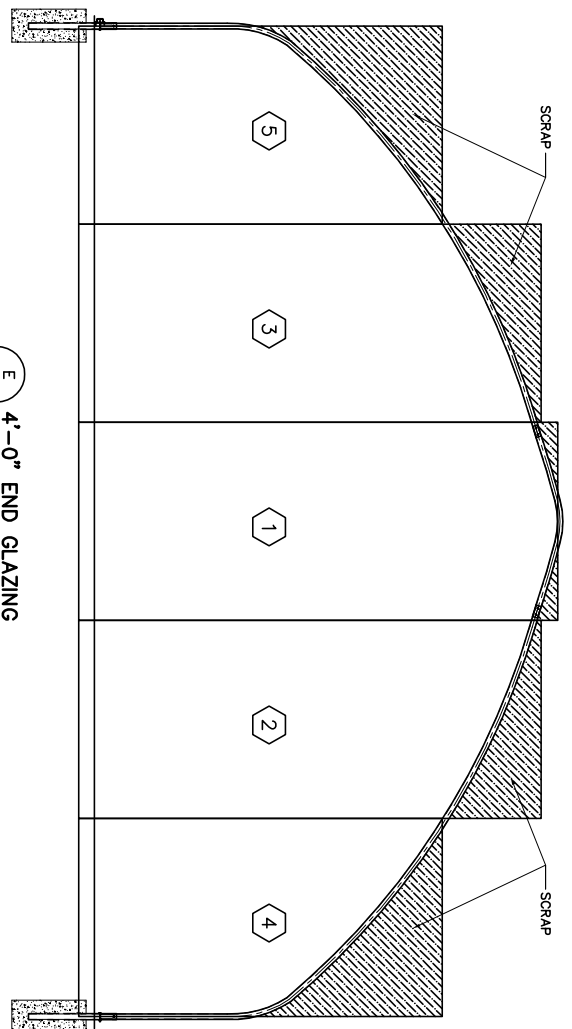


**F** POSTS & GIRTS  
S4.01 SCALE: N.T.S.



**B** 6'-0" END GLAZING  
S4.01 SCALE: N.T.S.

6'-0" WIDE POLYCARBONATE SHEETS  
SHEET #1 IS 198" (16'-6")  
SHEETS #2 & #3 ARE 192" (16'-0")  
SHEETS #4 & #5 ARE 156" (13'-0")  
REQUIRES 74 LINEAL FEET OF DOUBLE H-SPLICE  
REQUIRES 110 SCREWS



**E** 4'-0" END GLAZING  
S4.01 SCALE: N.T.S.

6'-0" WIDE POLYCARBONATE SHEETS  
SHEET #1 IS 174" (14'-6")  
SHEETS #2 & #3 ARE 168" (14'-0")  
SHEETS #4 & #5 ARE 132" (11'-0")  
REQUIRES 62 LINEAL FEET OF DOUBLE H-SPLICE  
REQUIRES 100 SCREWS



313 3rd Ave  
Redmond, OR 97754  
909-543-7955  
FAX: 909-589-4665  
Email: gpinfo@outpacific.com

ENGINEERS' STAMP:  
ENGINEERS SEAL APPLIES TO COMPANY'S ONLY

REVISION RECORD

NO.	DATE	DESCRIPTION
1	11/22/07	ISSUED
2	12/22/07	ISSUED

GOLDEN PACIFIC

R.B.I. NO.:  
DRAWN BY: XXX  
DOCUMENT DATE: 04/20/07  
SHEET TITLE: 30FT. HOUSE  
SHEET: S4.01