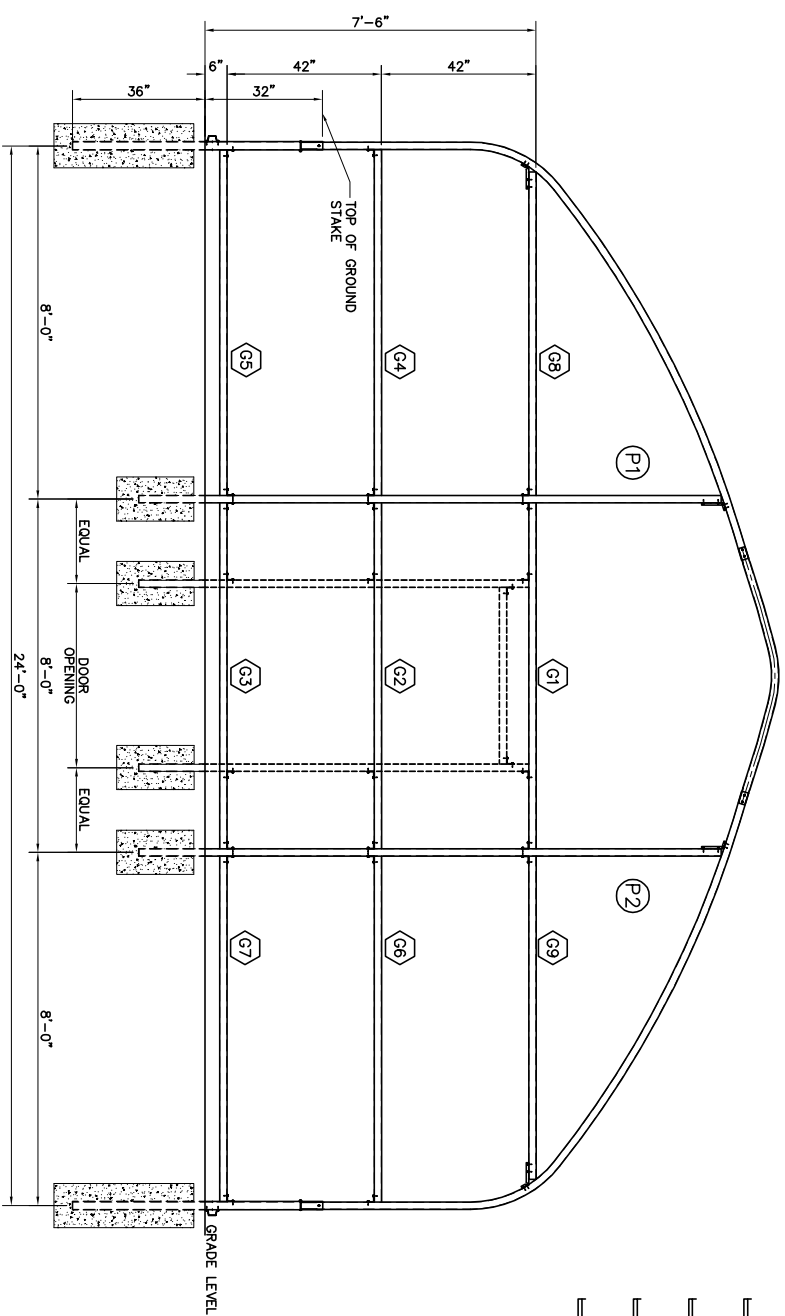
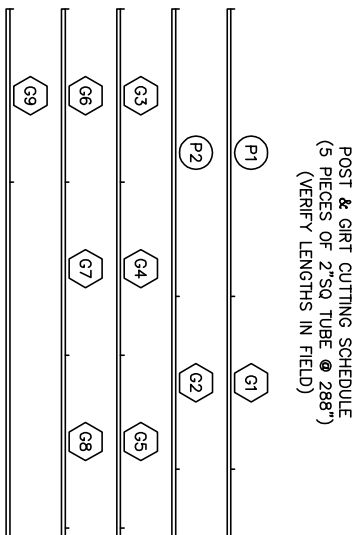


NOTES:  
Below is the suggested post and girt spacing layout for one end when using steel gable framing kit (optional). This kit contains sufficient lengths of 2" square steel tubing to be field cut as per cutting schedule.  
Any deviations from noted post spacings will alter these lengths and may result in insufficient amounts of tubing.

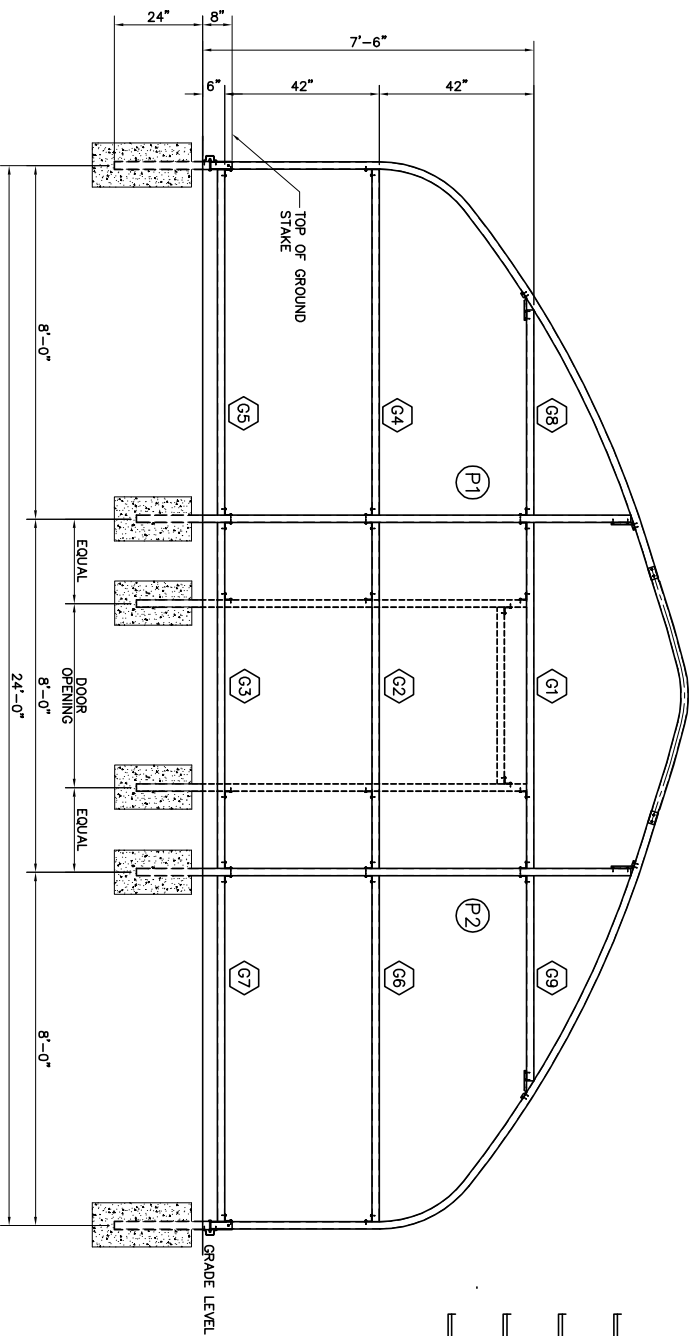


**A** 6'-0" END FRAMING  
S3.01 SCALE: N.T.S.

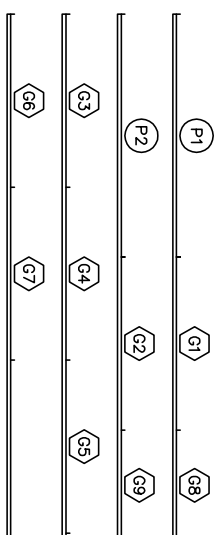


**C** POSTS & GIRTS  
S3.01 SCALE: N.T.S.

P1 THRU P2 = 156" (13'-0")  
G1 THRU G9 = 94" (7'-10")

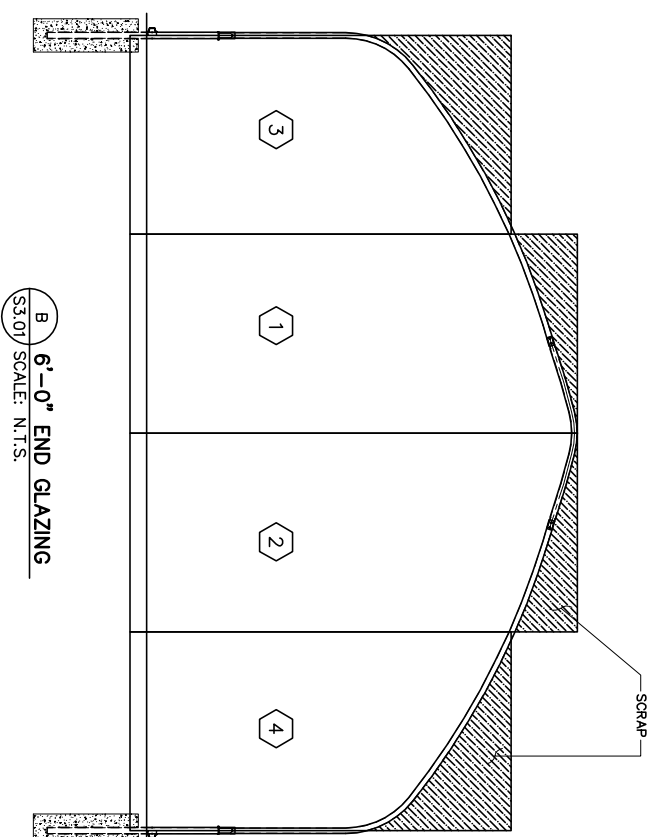


**D** 4'-0" END FRAMING  
S3.01 SCALE: N.T.S.



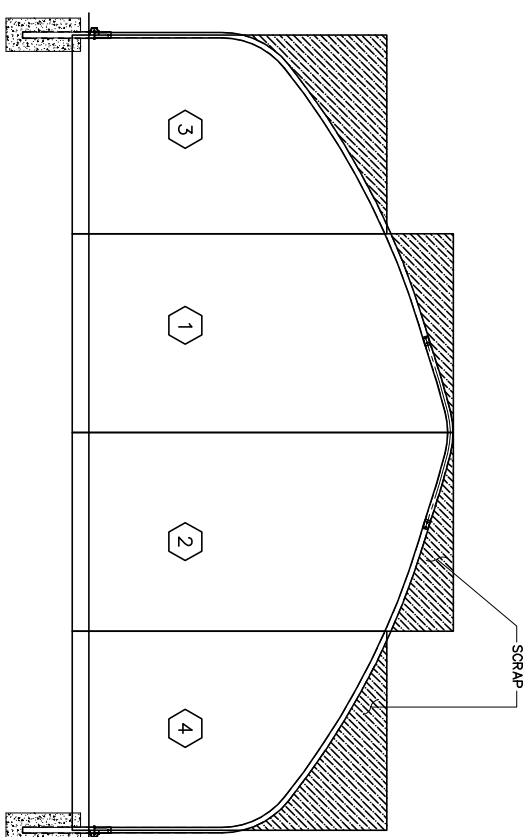
**F** POSTS & GIRTS  
S3.01 SCALE: N.T.S.

P1 THRU P2 = 132" (11'-0")  
G1 THRU G7 = 94" (7'-10")  
G8 THRU G9 = 60" (5'-0")



**B** 6'-0" END GLAZING  
S3.01 SCALE: N.T.S.

6'-0" WIDE POLYCARBONATE SHEETS  
SHEETS #1 & #2 ARE 162" (13'-6")  
SHEETS #3 & #4 ARE 138" (11'-6")  
REQUIRES 52 LINEAL FEET OF DOUBLE H-SPLICE  
REQUIRES 80 SCREWS



**E** 4'-0" END GLAZING  
S3.01 SCALE: N.T.S.

6'-0" WIDE POLYCARBONATE SHEETS  
SHEETS #1 & #2 ARE 138" (11'-6")  
SHEETS #3 & #4 ARE 114" (9'-6")  
REQUIRES 42 LINEAL FEET OF DOUBLE H-SPLICE  
REQUIRES 70 SCREWS



313 Arena Way  
Redmond, OR 97756  
909-563-7995  
909-563-7995  
Email: gpcorp@outpro.com

ENGINEERS STAMP:  
ENGINEER SEAL APPLIES TO DESIGN OF THIS PROJECT

REVISION RECORD

NO.	DATE	DESCRIPTION
1	07/27/09	
2	07/29/09	

GOLDEN PACIFIC

R.B.I. NO.:

DRAWN BY: XXX

DOCUMENT DATE: 04/20/07

SHEET TITLE: 24FT HOUSE

SHEET: S3.01